

RERF at 50

Looking to the  
future

80 years after  
the atomic bombings

Free  
admission

No reservation  
required



Open House@Hiroshima  
[Open to the public]

2025 8.5 Tue 6 Wed

Time 9:00 am~4:00 pm (Last admission at 3:30 pm)

Radiation Effects Research Foundation, Hiroshima Laboratory  
(5-2 Hijiyama Park, Minami-ku, Hiroshima City)



ACCESS

Approximately 10 minutes from the Hijiyama-shita Station  
Take Skywalk from the Danbara-chuo Bus Stop  
※ This map includes information pertaining to a new train line that is  
set to open the day before the event.

Organizer

Radiation Effects Research Foundation

Inquiries

RERF Open House Committee 2025 TEL. 082-261-3131  
5-2 Hijiyama Park, Minami-ku, Hiroshima City Email: hirooh2025@rerf.or.jp

Information about  
the Open House





## Exhibits

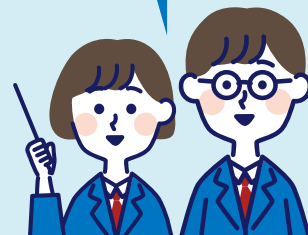
- Summary of the health studies on atomic bomb survivors
- Summary of the health studies on children of atomic bomb survivors
- Epidemiological studies on radiation effects
- Estimating radiation doses of atomic bomb survivors
- Overview of the cancer registry
- Estimating radiation doses using chromosomes and teeth
- Genetic effects study of radiation
- Cancer DNA mutations
- Study on radiation exposure and immune system aging
- What does the Biosample Research Center do?
- What kinds of samples does it collect? How does it store them?
- A Guide to Biosample Storage
- Hiroshima right after the bombing and on the road to recovery (archival video footage of Hiroshima City)

## Special Exhibits

### High School Newspaper Club Provides In-Depth Coverage of RERF

The Sotoku High School Newspaper Club has won the 2024 Grand Prize at the All-Japan Senior High School Cultural Festival, dubbed the "Inter-High of Cultural Clubs," the Gold Award at the All-Japan Senior High School Newspaper Contest, and two national titles. The Newspaper Club will now take on the challenge of covering RERF from a unique perspective. During the Open House, they plan on releasing a special edition, created over three months of activities.

On August 6, we also plan on holding a roundtable discussion with some of the high school students who worked to cover RERF.



## Science Area



=Great for visitors  
with kids



=Exhibit available in  
Japanese and English.



■ Do you want to know how blood works? See what it looks like under a microscope!



■ See what chromosomes look like through a microscope!

■ Health exam corner: Have your bone strength measured  
(Eligible: Visitors age 20 and over) \*The last entry on August 6 is at 3:00 pm.



■ How are the risks of atomic bomb radiation studied?



■ What can I learn from statistics? Take the quiz challenge to find out!



■ Come and see DNA!



■ Separate the colors of a black water-based pen with paper.



■ Liquid Nitrogen: Welcome to the World of -196° C



■ Use a laboratory tool: the micropipette.



■ Catch a glimpse of radiation in the cloud chamber



■ Let's measure natural radiation using a survey meter.



## Auditorium Program

Lecture

**8/5**  
Tue  
2:00 pm~

### Path from ABCC to RERF: Half a Century of Progress through Health Examinations

Presenter: Dr. Waka Ohishi  
Director/Chief of the Department of Clinical Studies, RERF

Dr. Ohishi will reflect on the path of health examinations initiated by ABCC when it was founded in 1947 and continued by RERF to bring to light the effects of atomic-bomb radiation on human health. Specifically, Dr. Ohishi will introduce what we have learned over the past 50 years through our activities and health examinations.

Roundtable  
Discussion

**8/6**  
Wed  
2:00 pm~

### High School Newspaper Club Provides In-Depth Coverage of RERF

Panelists: Students from the Sotoku High school  
Newspaper club and Others

The year 2025 marks several important milestones: the 80th anniversary of the atomic bombings, the 50th anniversary of RERF's establishment, and the 30th Open House. How should RERF's research activities and data be passed on to the future? Hiroshima high school students will provide in-depth coverage of RERF and explore ideas for RERF's future together with the foundation.